

\$579,900 - 5403 Rundlevue Road Ne, Calgary

MLS® #A2198400

\$579,900

4 Bedroom, 2.00 Bathroom, 1,075 sqft

Residential on 0.01 Acres

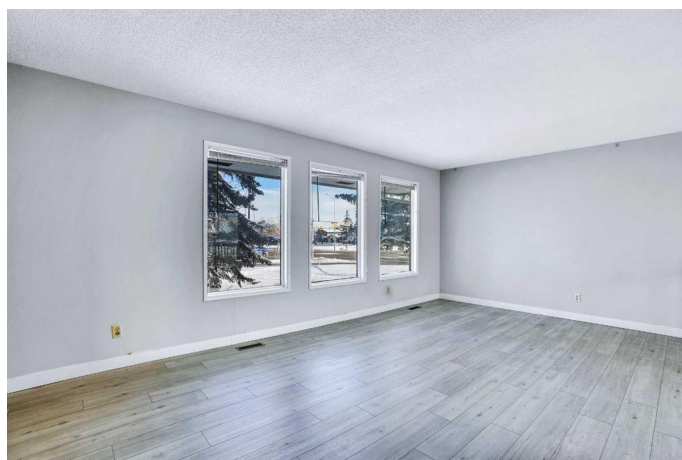
Rundle, Calgary, Alberta

Welcome to this amazing corner lot property with spectacular views of surroundings in beautiful community of Rundle. As you step up, wide open floor plan with ample of natural lights greets you to this gem. The Main floor offer 2 spacious size of bedrooms along with airy and bright living room and kitchen. The basement features an illegal 2-bedroom suite, offering excellent potential for investors. Conveniently located near shopping and Lester B. Pearson High School. The south-facing backyard provides ample space for a double garage. Zoned R-CG, allowing for future development possibilities. Most ideal for first time home buyers or investor. Call you favorite realtor and Book showings today !!

Built in 1974

Essential Information

MLS® #	A2198400
Price	\$579,900
Bedrooms	4
Bathrooms	2.00
Full Baths	2
Square Footage	1,075
Acres	0.01
Year Built	1974
Type	Residential
Sub-Type	Detached
Style	Bi-Level



Status	Active
--------	--------

Community Information

Address	5403 Rundlevview Road Ne
Subdivision	Rundle
City	Calgary
County	Calgary
Province	Alberta
Postal Code	T1Y 1J7

Amenities

Parking Spaces	2
Parking	Off Street

Interior

Interior Features	No Smoking Home, No Animal Home
Appliances	Electric Stove, Microwave, Refrigerator, Washer
Heating	Forced Air
Cooling	None
Has Basement	Yes
Basement	Finished, Full

Exterior

Exterior Features	None
Lot Description	Back Lane, Corner Lot
Roof	Asphalt Shingle
Construction	Vinyl Siding, Wood Siding
Foundation	Poured Concrete

Additional Information

Date Listed	March 2nd, 2025
Days on Market	107
Zoning	R-CG

Listing Details

Listing Office	CIR Realty
----------------	------------

Data is supplied by Pillar 9â„¢ MLS® System. Pillar 9â„¢ is the owner of the copyright in its MLS® System. Data is deemed reliable but is not guaranteed accurate by Pillar 9â„¢. The trademarks MLS®, Multiple Listing Service® and the associated logos are owned by The Canadian Real Estate Association (CREA) and identify the quality of services provided by real estate professionals who are members of CREA. Used under license.