

\$724,500 - 322 Baneberry Way Sw, Airdrie

MLS® #A2222916

\$724,500

3 Bedroom, 3.00 Bathroom, 2,209 sqft
Residential on 0.08 Acres

Wildflower, Airdrie, Alberta

Brand New Marigold 4 | Rustic Farmhouse | Separate Entrance | Airdrie, AB Welcome to the Marigold 4 – a stunning 2,082 sq ft Rustic Farmhouse-style single-family home designed for modern living. This 3 bed, 2.5 bath home features a main floor study, upper bonus room with covered balcony, and city views—perfect for families. Highlights include:

- Front-attached double garage
- Unfinished basement with separate side entrance for potential future development potential
- Open-concept kitchen with gas line rough-in
- Stylish railing throughout
- Luxurious 5-piece ensuite in the primary bedroom
- Bonus room with covered balcony – great for relaxing or entertaining
- Walking distance to Hillside Hub and nearby amenities

This brand new home blends function, flexibility, and rustic charm in one of Airdrie’s most desirable communities. Photos are representative.

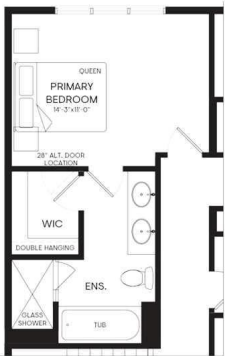


Main floor 898 sq ft. Upper floor 782 sq ft. Basement (undeveloped)

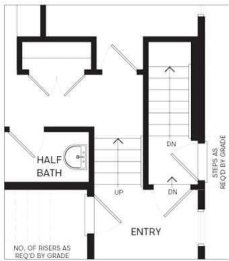
Built in 2025

Essential Information

| | |
|----------------|-----------|
| MLS® # | A2222916 |
| Price | \$724,500 |
| Bedrooms | 3 |
| Bathrooms | 3.00 |
| Full Baths | 2 |
| Half Baths | 1 |
| Square Footage | 2,209 |



Ensuite upgrade



Side door entry

| | |
|------------|-------------|
| Acres | 0.08 |
| Year Built | 2025 |
| Type | Residential |
| Sub-Type | Detached |
| Style | 2 Storey |
| Status | Active |

Community Information

| | |
|-------------|----------------------|
| Address | 322 Baneberry Way Sw |
| Subdivision | Wildflower |
| City | Airdrie |
| County | Airdrie |
| Province | Alberta |
| Postal Code | T4B3M9 |

Amenities

| | |
|----------------|------------------------|
| Amenities | Recreation Facilities |
| Parking Spaces | 4 |
| Parking | Double Garage Attached |
| # of Garages | 2 |

Interior

| | |
|-------------------|---|
| Interior Features | Bathroom Rough-in, Double Vanity, Kitchen Island, Open Floorplan, Separate Entrance, Stone Counters, Walk-In Closet(s), Recreation Facilities |
| Appliances | Dishwasher, Dryer, Electric Range, Humidifier, Microwave, Refrigerator, Washer |
| Heating | Forced Air, Natural Gas |
| Cooling | None |
| Has Basement | Yes |
| Basement | Full, Unfinished |

Exterior

| | |
|-------------------|--------------------------------|
| Exterior Features | Private Entrance |
| Lot Description | Back Yard, Close to Clubhouse |
| Roof | Asphalt Shingle |
| Construction | Cement Fiber Board, Wood Frame |
| Foundation | Poured Concrete |

Additional Information

| | |
|----------------|----------------|
| Date Listed | May 20th, 2025 |
| Days on Market | 14 |
| Zoning | NA |
| HOA Fees | 1000 |
| HOA Fees Freq. | ANN |

Listing Details

| | |
|----------------|--------------------|
| Listing Office | Bode Platform Inc. |
|----------------|--------------------|

Data is supplied by Pillar 9â„¢ MLSÂ® System. Pillar 9â„¢ is the owner of the copyright in its MLSÂ® System. Data is deemed reliable but is not guaranteed accurate by Pillar 9â„¢. The trademarks MLSÂ®, Multiple Listing ServiceÂ® and the associated logos are owned by The Canadian Real Estate Association (CREA) and identify the quality of services provided by real estate professionals who are members of CREA. Used under license.